

FOR LEASE
4,938 RSF Available

SANSONE
group

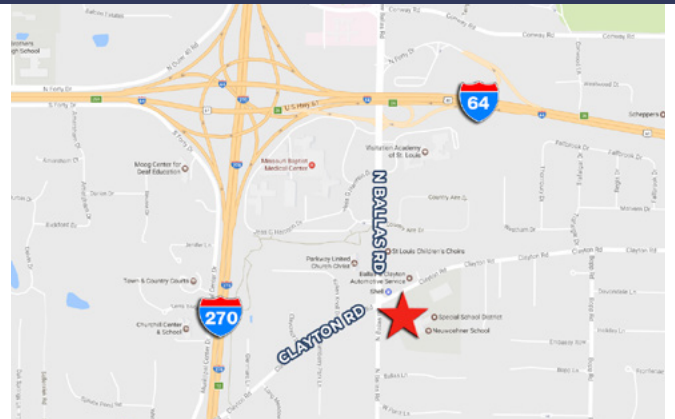
2730 North Ballas Road



PROPERTY FEATURES

- 4,938 RSF available
- First floor, main lobby presence
- Move-in ready condition
- Monument signage
- Free covered and surface parking
- Conveniently located at N. Ballas Rd. & Clayton Rd. with easy access to I-270 & I-64
- **Please call for lease rate**

 **2730 NORTH BALLAS ROAD**
St. Louis, MO 63131



FOR MORE INFORMATION PLEASE CONTACT:

Brandon Wappelhorst, CCIM
bwappelhorst@sansonegroup.com

Tom Bajardi, CCIM, SIOR
tbajardi@sansonegroup.com

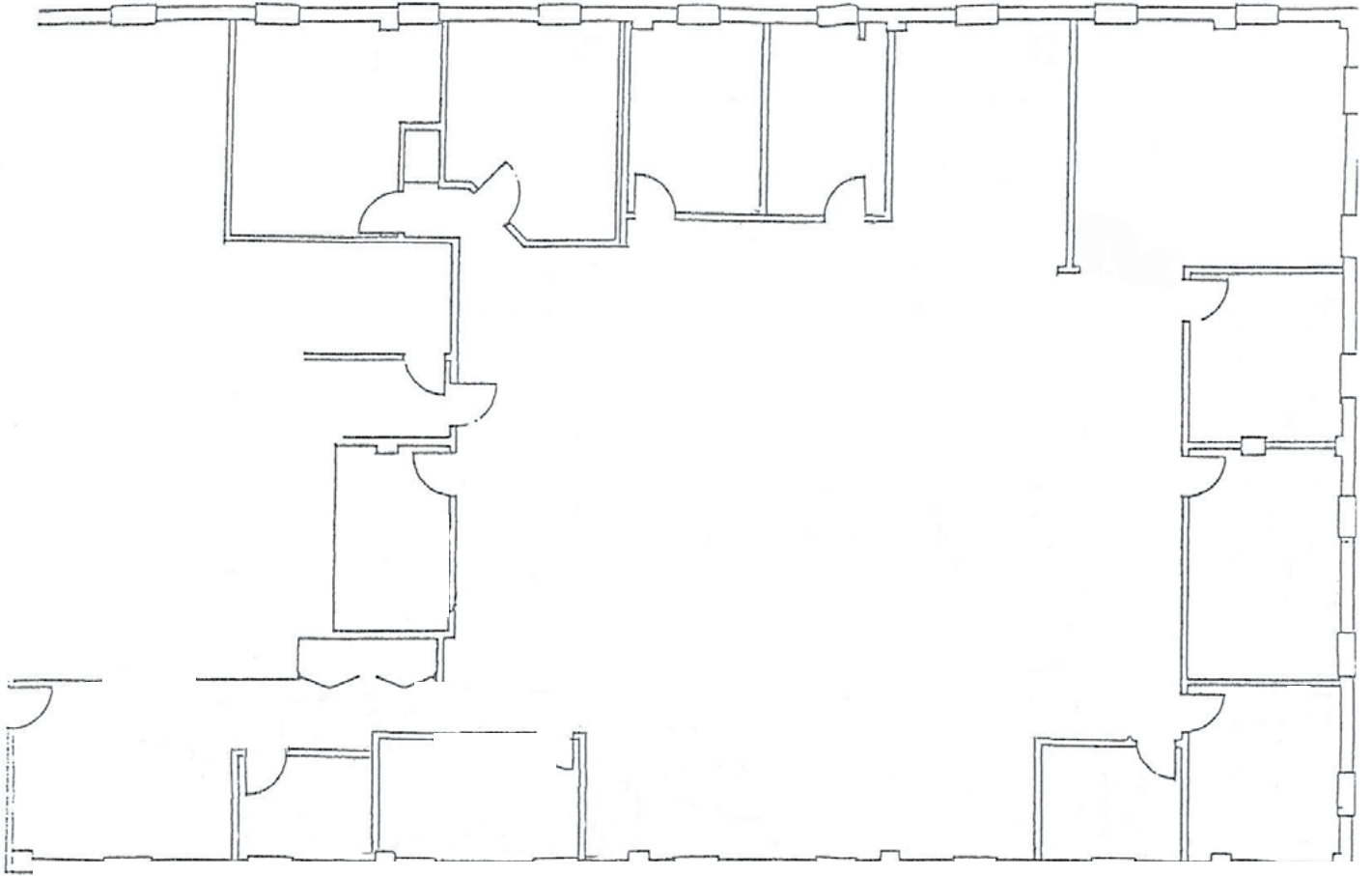
Nick Fiquette
nfiquette@sansonegroup.com

 **314-727-6664**

 **www.sansonegroup.com**

 **120 S. Central, Suite 500**
St. Louis, Missouri 63105

FLOOR PLAN



1st Floor • 4,938 RSF

FOR MORE INFORMATION:

Brandon Wappelhorst, CCIM
bwappelhorst@sansonegroup.com

Tom Bajardi, CCIM, SIOR
tbajardi@sansonegroup.com

Nick Fiquette
nfiquette@sansonegroup.com



120 S. Central, Suite 500
St. Louis, Missouri 63105

314-727-6664



The information contained herein is not warranted, although it has been obtained from the owner of the property or from other sources that we deem reliable. It is subject to change without notice. Seller and broker make no representation as to the environmental condition of the property and recommend purchaser's independent investigation.