

FORMER 7-ELEVEN - PARK HILLS



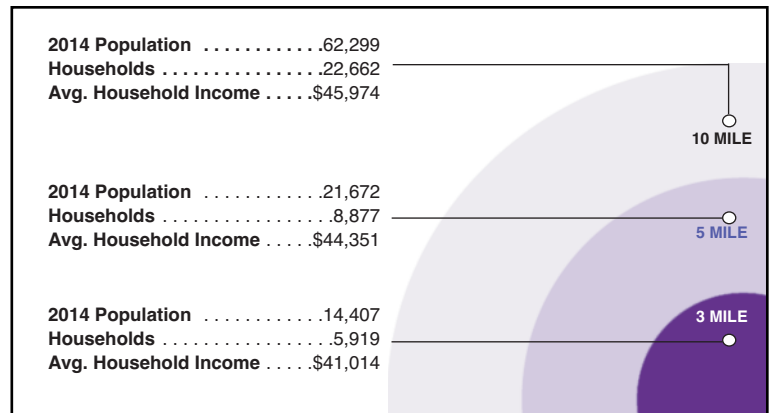
**FOR SALE**  
**2,560 SF Freestanding**  
**Building on 0.47 Acre Lot**



SEC STRAUSS DR. & E. MAIN ST.  
109 STRAUSS DR. • PARK HILLS, MO

**PROPERTY AT-A-GLANCE**

- Located in the heart of Park Hills, across from Save-a-Lot and Dollar General
- Large pylon sign available
- Close proximity to Johnson's Shut-ins & Elephant Rock State Park
- Asking price: \$150,000



**FOR LEASING INFORMATION:**

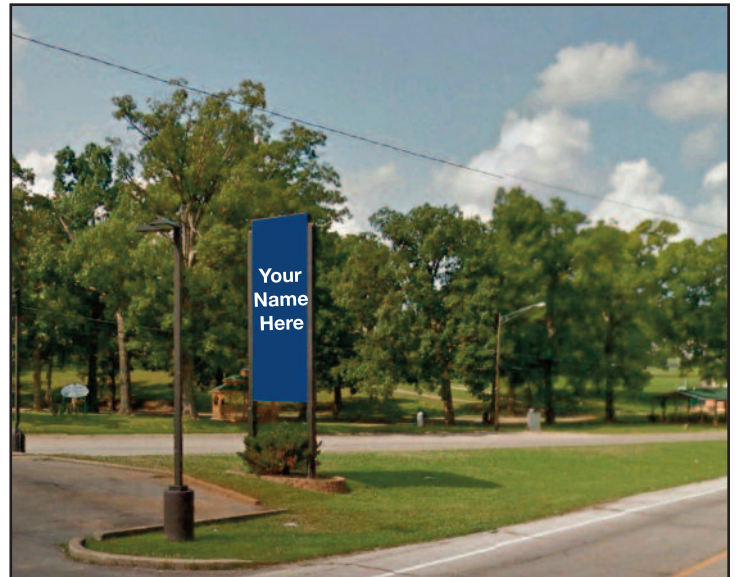
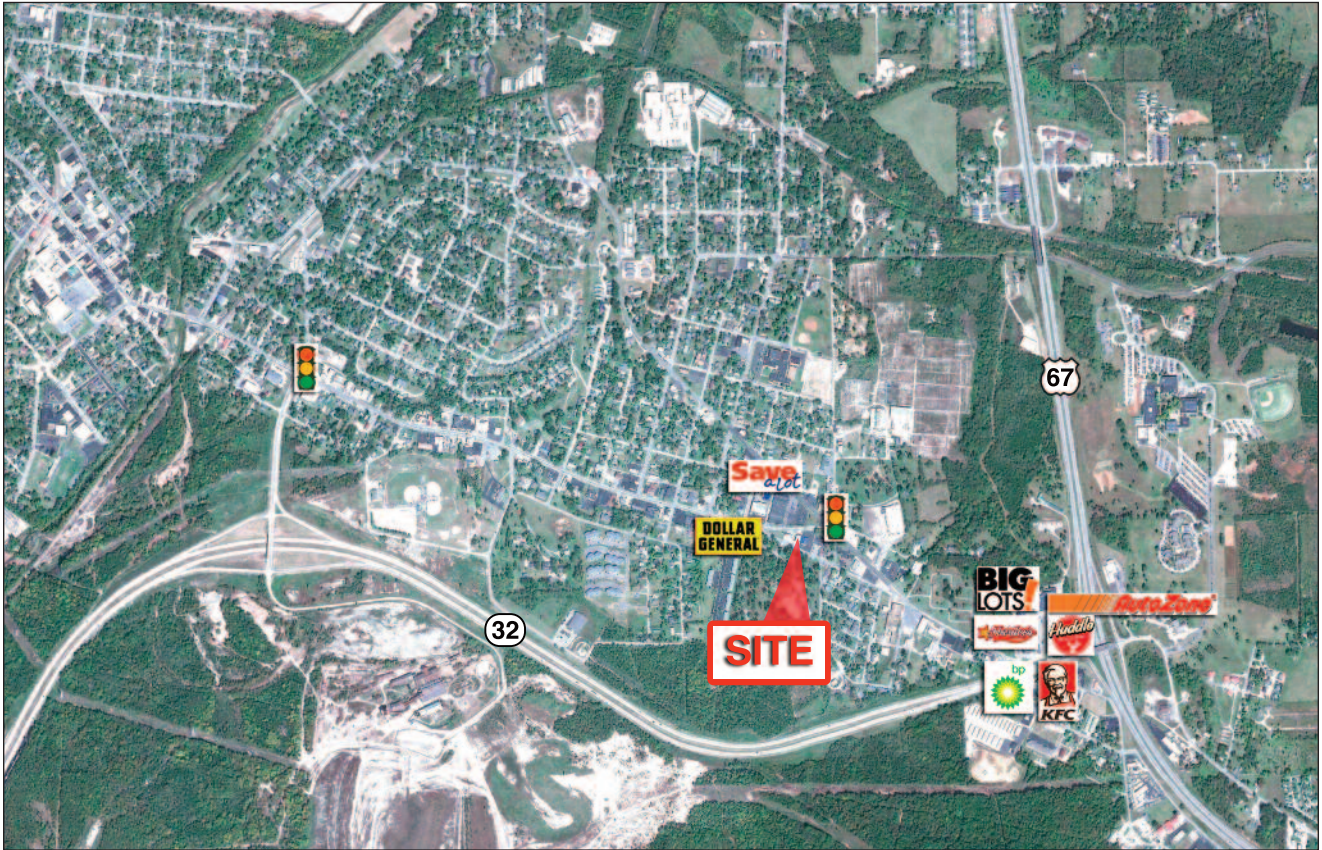
**KAREN SHAW, CLS**  
kshaw@sansonegroup.com

**314-727-6664**

**WWW.SANSONEGROUP.COM**



# FORMER 7-ELEVEN - PARK HILLS



120 S. Central, Suite 500  
St. Louis, Missouri 63105

**314-727-6664**



FOR LEASING INFORMATION:

**KAREN SHAW, CLS**  
kshaw@sansonegroup.com

The information contained herein is not warranted, although it has been obtained from the owner of the property or from other sources that we deem reliable. It is subject to change without notice. Seller and broker make no representation as to the environmental condition of the property and recommend purchaser's independent investigation.