

FOR SALE

16,418 SF Available

SANSONE

group

GCM Building



RETAIL AT-A-GLANCE

- 16,418 SF historic Fayetteville building at the intersection of West Mountain Street and South Block Avenue
- Neighbors with Fayetteville City Hall and the Visitor's Center
- Located in the heart of downtown near retail, restaurants, offices and within walking distance of the University of Arkansas
- **Please Call for Sales Price**



GCM BUILDING

101 W. Mountain St. • Fayetteville, AR 72701

AREA DEMOGRAPHICS

— RADIUS IN MILES —



FOR MORE INFORMATION PLEASE CONTACT:

Mike Driver

mdriver@sansonegroup.com



479-435-0238

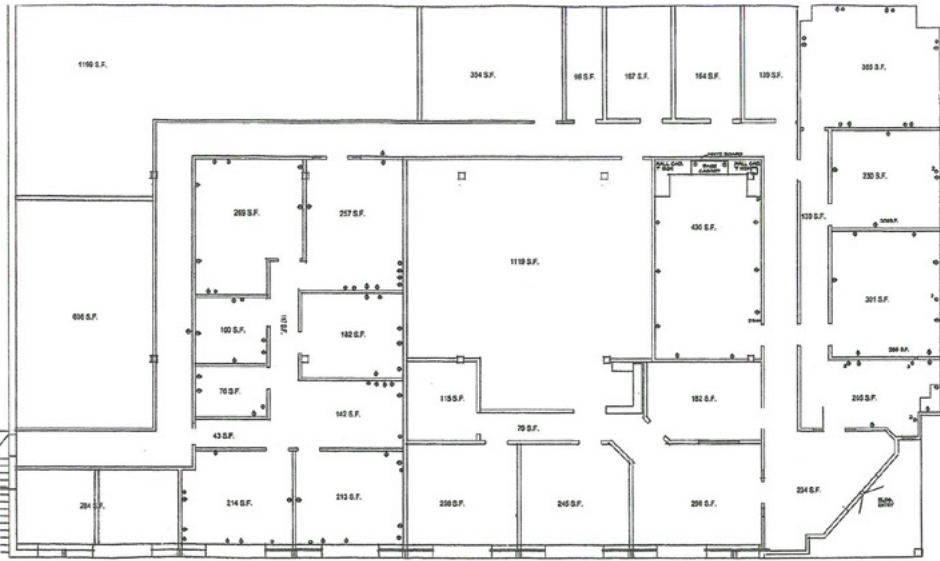


www.sansonegroup.com

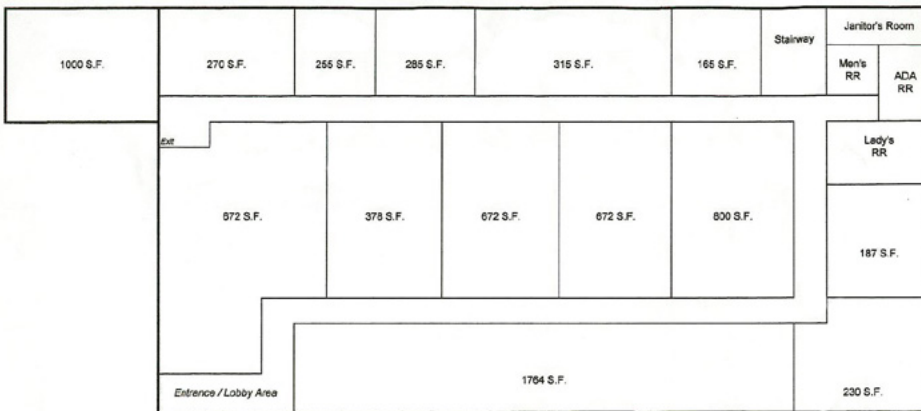


**1826 N. Crossover, Suite 4
Fayetteville, Arkansas 72701**

FLOOR PLAN & PHOTOS



Upper Level • 8,753 RSF



Lower Level • 7,665 RSF



FOR MORE INFORMATION:

Mike Driver

mdriver@sansonegroup.com



SANSONE
group

1826 N. Crossover, Suite 4
Fayetteville, AR 72701

479-435-0238



The information contained herein is not warranted, although it has been obtained from the owner of the property or from other sources that we deem reliable. It is subject to change without notice. Seller and broker make no representation as to the environmental condition of the property and recommend purchaser's independent investigation.