

# FOR LEASE

943 - 9,504 SF Available

# SANSONE group

## South County Medical Center

**NEW OWNERSHIP!  
RENOVATIONS  
COMING SOON**



### PROPERTY FEATURES

- Join SSM Health, Mercy & Esse Health
- Park-like setting close to St. Anthony's Medical Center
- Abundant surface parking with 4.5/1,000 SF parking ratio
- Renovations coming soon
- \$26.00/RSF Full Service

 **SOUTH COUNTY MEDICAL CENTER**  
13303 Tesson Ferry • St. Louis, MO 63128

### AVAILABILITIES

Suite	RSF
20	943
50	3,634 968 } ..... 4,602
54	
53	3,197
109	1,435
111	9,504

**FOR MORE INFORMATION PLEASE CONTACT:**

**Tom Bajardi, CCIM, SIOR**  
tbajardi@sansonegroup.com

**Brandon Wappelhorst, CCIM**  
bwappelhorst@sansonegroup.com

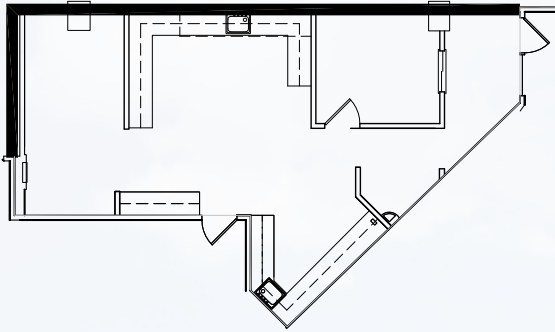
**Nick Fiquette**  
nfiquette@sansonegroup.com

 314-727-6664

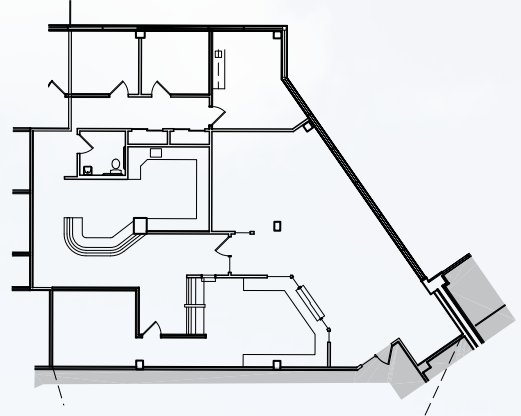
 [www.sansonegroup.com](http://www.sansonegroup.com)

 120 S. Central, Suite 500  
St. Louis, Missouri 63105

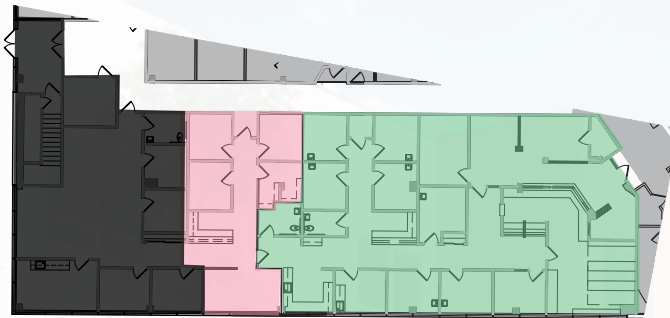
# FLOOR PLANS



**SUITE 20 • 943 RSF**



**SUITE 53 • 3,197 RSF**



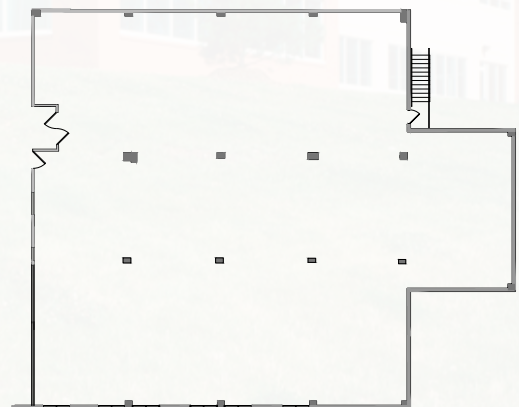
**SUITE 54  
968 RSF**

**SUITE 50  
3,634 RSF**

**Contiguous  
4,602 RSF**



**SUITE 109 • 1,435 RSF**



**SUITE 111 • 9,504 RSF**

## FOR MORE INFORMATION:

**Tom Bajardi, CCIM, SIOR**  
tbajardi@sansonegroup.com

**Brandon Wappelhorst, CCIM**  
bwappelhorst@sansonegroup.com

**Nick Fiquette**  
nfiquette@sansonegroup.com



120 S. Central, Suite 500  
St. Louis, Missouri 63105

**314-727-6664**



The information contained herein is not warranted, although it has been obtained from the owner of the property or from other sources that we deem reliable. It is subject to change without notice. Seller and broker make no representation as to the environmental condition of the property and recommend purchaser's independent investigation.