

# FOR LEASE

1,400 SF Available

# SANSONE

group

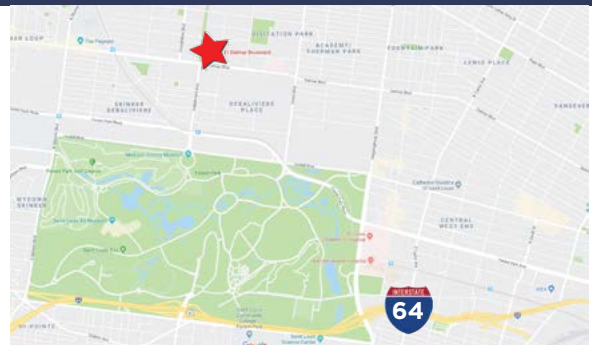
## 5621 Delmar Boulevard



### PROPERTY FEATURES

- Close proximity to the Loop
- Secure, surface parking
- \$1,710/ month
- Includes storage, parking, and utilities

 5621 DELMAR BOULEVARD  
St. Louis, MO 63112



**FOR MORE INFORMATION PLEASE CONTACT:**

**Brandon Wappelhorst, CCIM, SIOR**  
bwappelhorst@sansonegroup.com

**Tom Bajardi, CCIM, SIOR**  
tbajardi@sansonegroup.com

**Nick Fiquette**  
nfiquette@sansonegroup.com

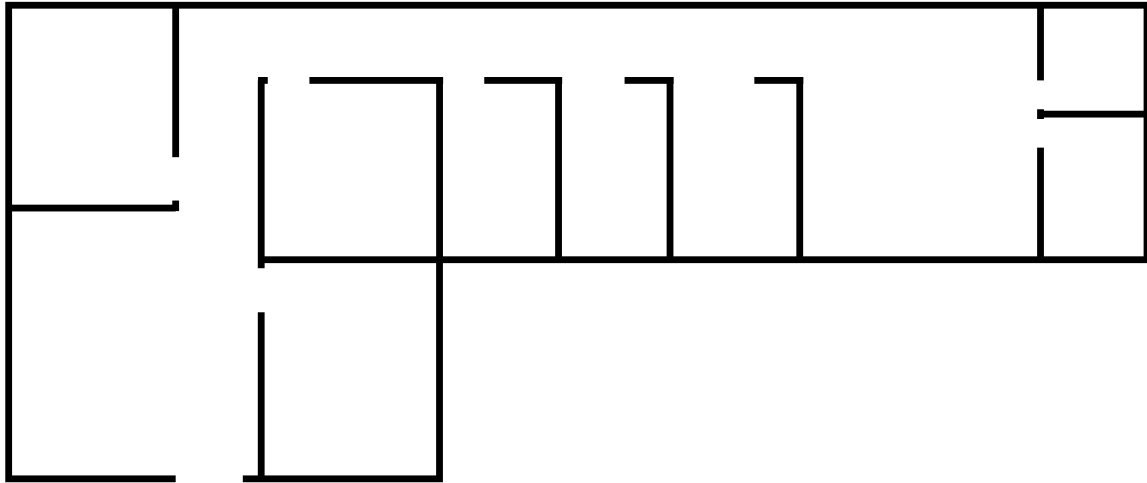
 314-727-6664

 [www.sansonegroup.com](http://www.sansonegroup.com)

 120 S. Central, Suite 500  
St. Louis, Missouri 63105

# FLOOR PLAN

**Suite 109**  
**1,400 SF Office Space Available**



## FOR MORE INFORMATION:

**Brandon Wappelhorst, CCIM, SIOR**  
bwappelhorst@sansonegroup.com

**Tom Bajardi, CCIM, SIOR**  
tbajardi@sansonegroup.com

**Nick Fiquette**  
nfiquette@sansonegroup.com



120 S. Central, Suite 500  
St. Louis, Missouri 63105

**314-727-6664**



The information contained herein is not warranted, although it has been obtained from the owner of the property or from other sources that we deem reliable. It is subject to change without notice. Seller and broker make no representation as to the environmental condition of the property and recommend purchaser's independent investigation.